

A photograph of a stone staircase in a wooded area. The sun is shining through the trees, creating a hazy, dappled light effect. The staircase is made of stone steps and is surrounded by dense foliage and trees. The text is overlaid on the image.

**West Pennine Moors AMC**  
**15<sup>th</sup> July 2015**

**Rivington Terraced  
Gardens**



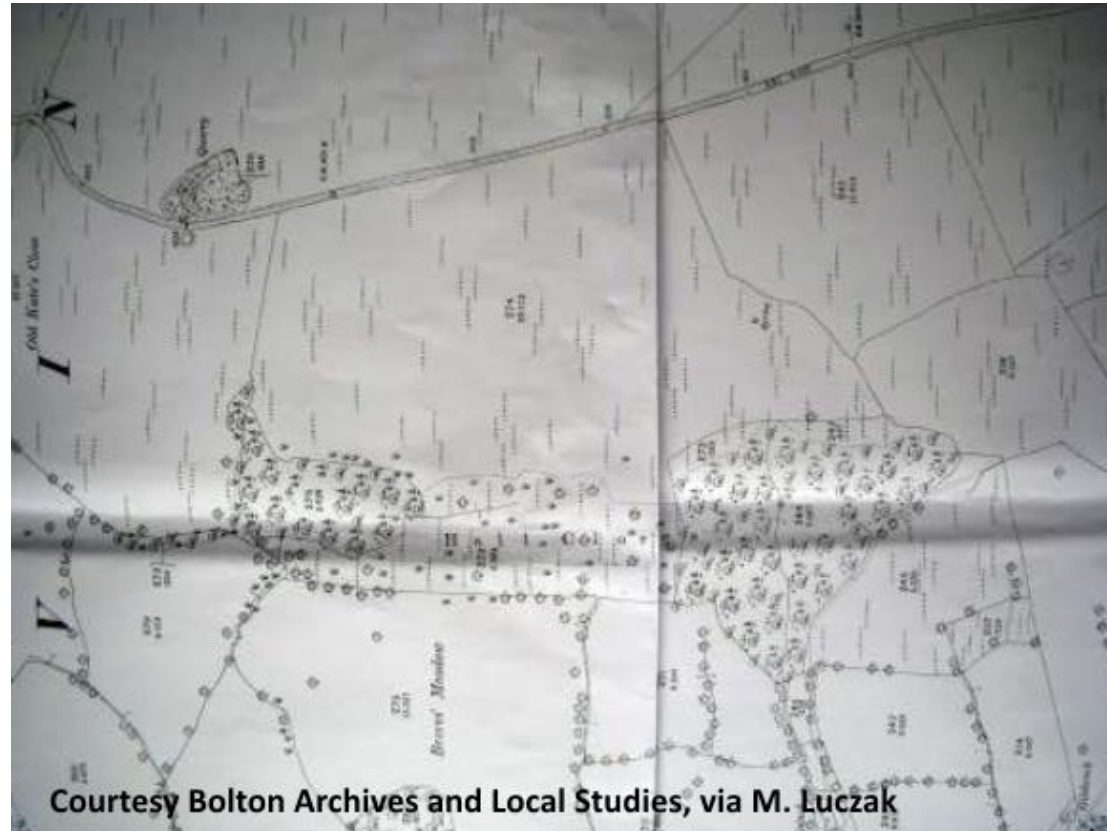
# Overview

- Rivington before Lever
- Lever and Mawson
- Roynton Cottage and Phase 1
- The Bungalow and Phase 2
- Post-Lever – Magee to the present day
- Legacy written in landscape?
- Plans for the future
- Timing



# Rivington before Lever

1892 OS Map





# 1907 OS Map



Courtesy Bolton Archives and Local Studies, via M. Luczak



# Lever and Mawson

*“I have wanted to consult you for the last two years, but all of my friends warned me that it would be useless, as you never worked for anyone holding less social rank than a Duke, whereas I am only a poor and indigent soap maker.”*

W.H.Lever, 1905 (M.D.Smith)



# Lever and Mawson

*“Of all the gardens which have ministered to my professional enjoyment, none comes into competition with Roynton.*

*The reason is a very human one.  
Everyone prophesied failure.”*

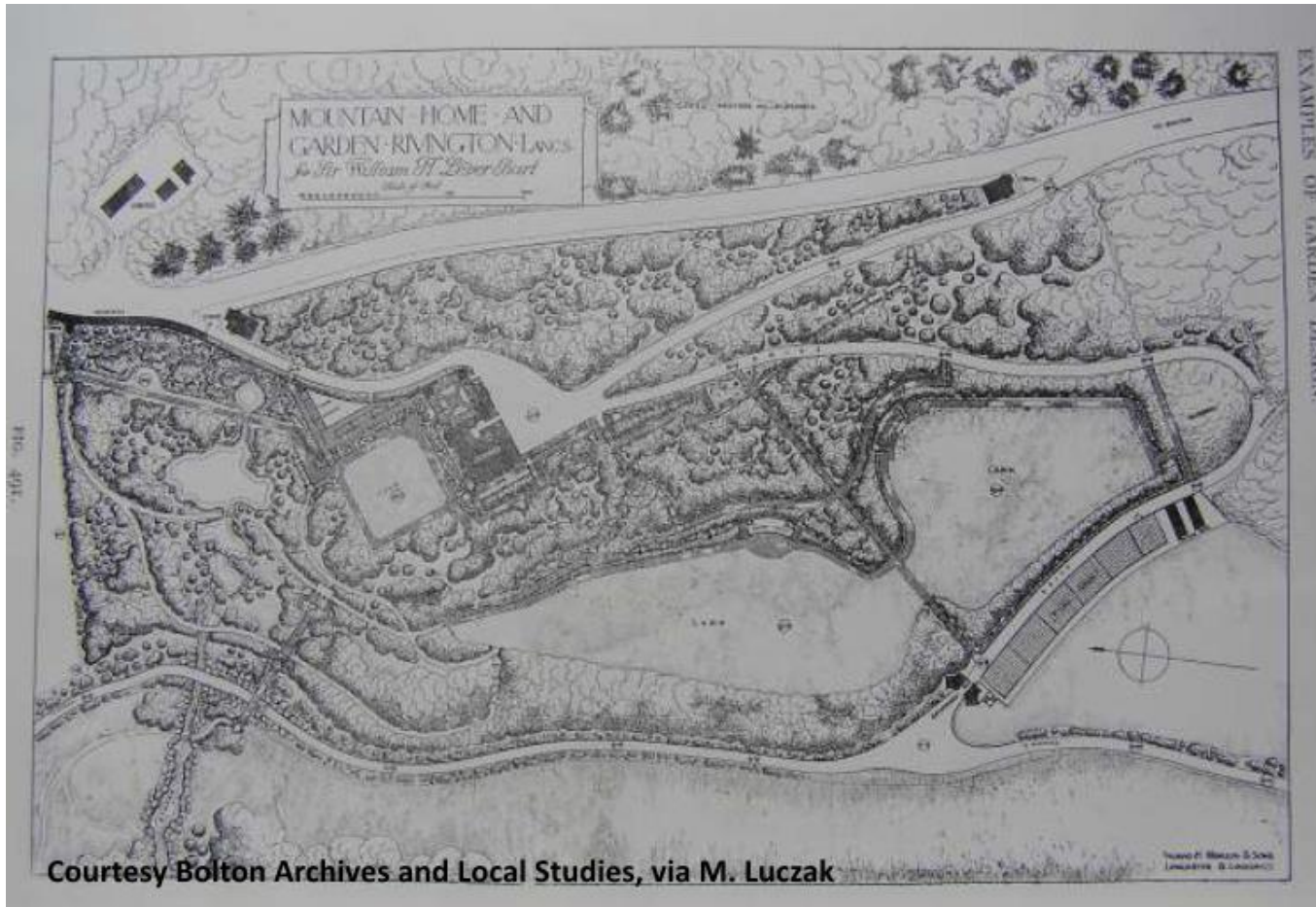
Thomas H Mawson, The Life and work of an English Landscape Architect (via M. Luczak).



# Roynton Cottage and Phase 1



Courtesy Cumbria Archive Centre, Kendal, via M. Luczak







*“I want to ask Sir William Lever whether he thinks his property on Rivington Pike is more valuable as one of his superfluous homes occasionally opened to people, or as a beacon lighted for King and Country, to see that here are some intolerable injustices for women”.*

Edith Rigby, 1913

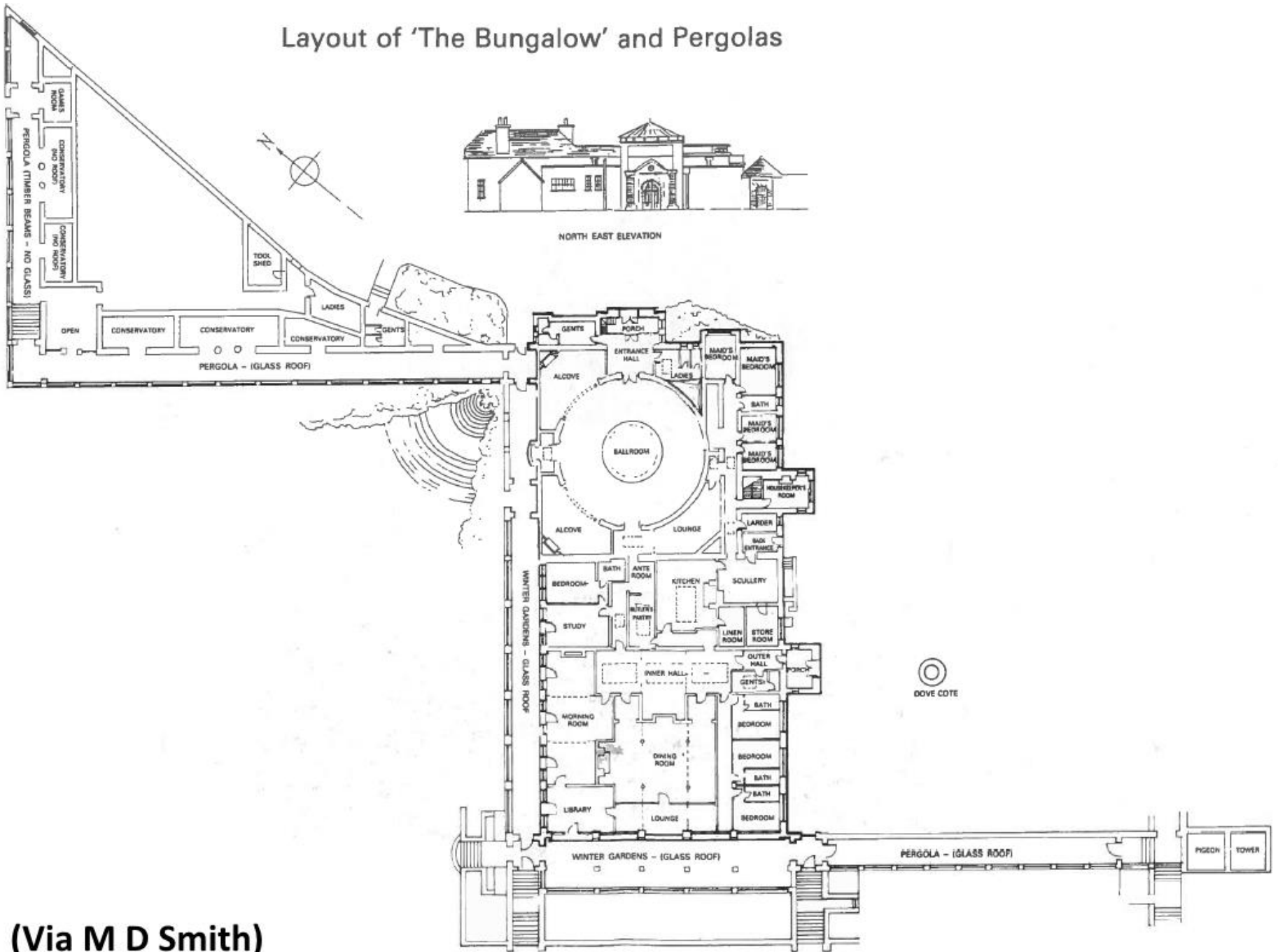


# The Bungalow and Phase 2

(Via M D Smith)



# Layout of 'The Bungalow' and Pergolas



(Via M D Smith)



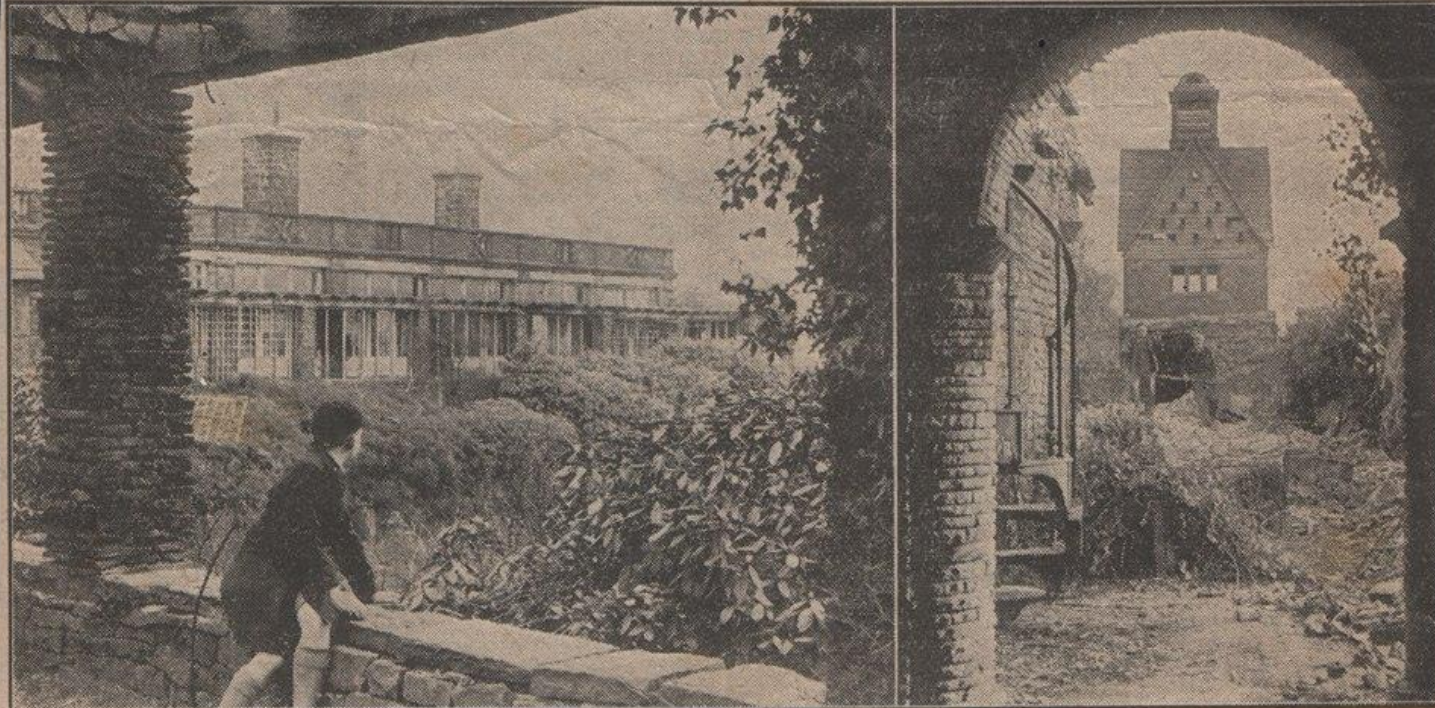
# Post-Lever – Magee to Present

- No significant additions to the Gardens
- MoD occupation in WWII
- Principal buildings successively demolished
- De facto public access to Gardens
- Management for water catchment
- Gating of Summer Houses/Loggias
- Removal of Rhododendron

FRIDAY, FEBRUARY 27, 1948

(HORWICH JOURNAL)

# Last Chapter in the Story of Rivington Bungalow



*These scenes illustrate the final chapter in the story of Rivington Bungalow, one-time treasured beauty spot, which is now being demolished because no one can find an economical use for which it could be preserved. Our photographs show how the buildings still retain some of the unique charm for which they were famous. Now, however, the former splendours of the Bungalow are taded as workmen complete the process of disintegration, started by long years of neglect and continued by the vandalism of irresponsible visitors. In the grounds, and flowers of unusual beauty, nature is slowly taking over from what seemed destined to revert to the bleak, bare hillside from which they were new.*

Paul Lacey, via Facebook

[www.rivingtonheritagetrust.co.uk](http://www.rivingtonheritagetrust.co.uk)

Rivington  
Heritage  
Trust



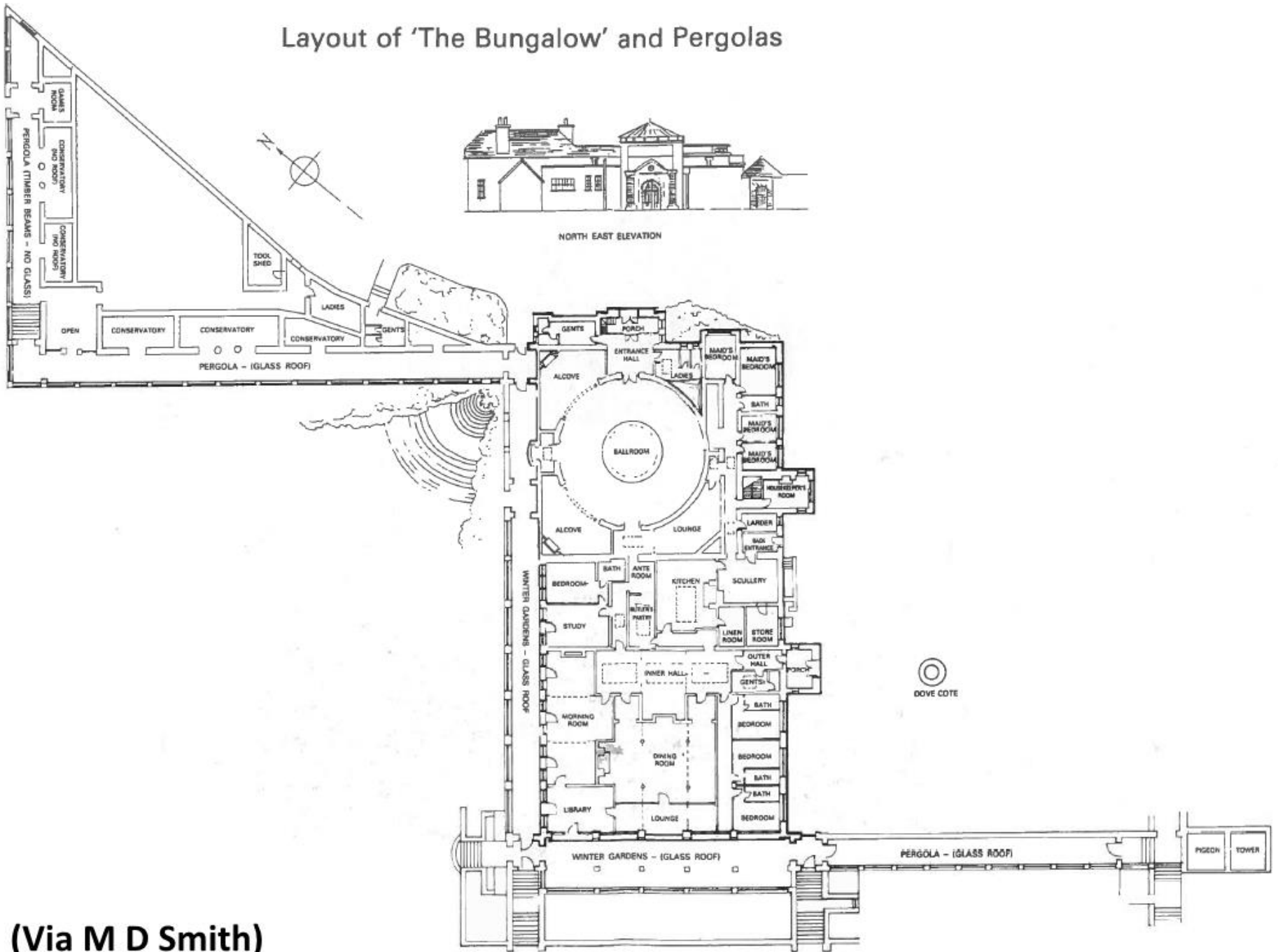
LOTTERY FUNDED



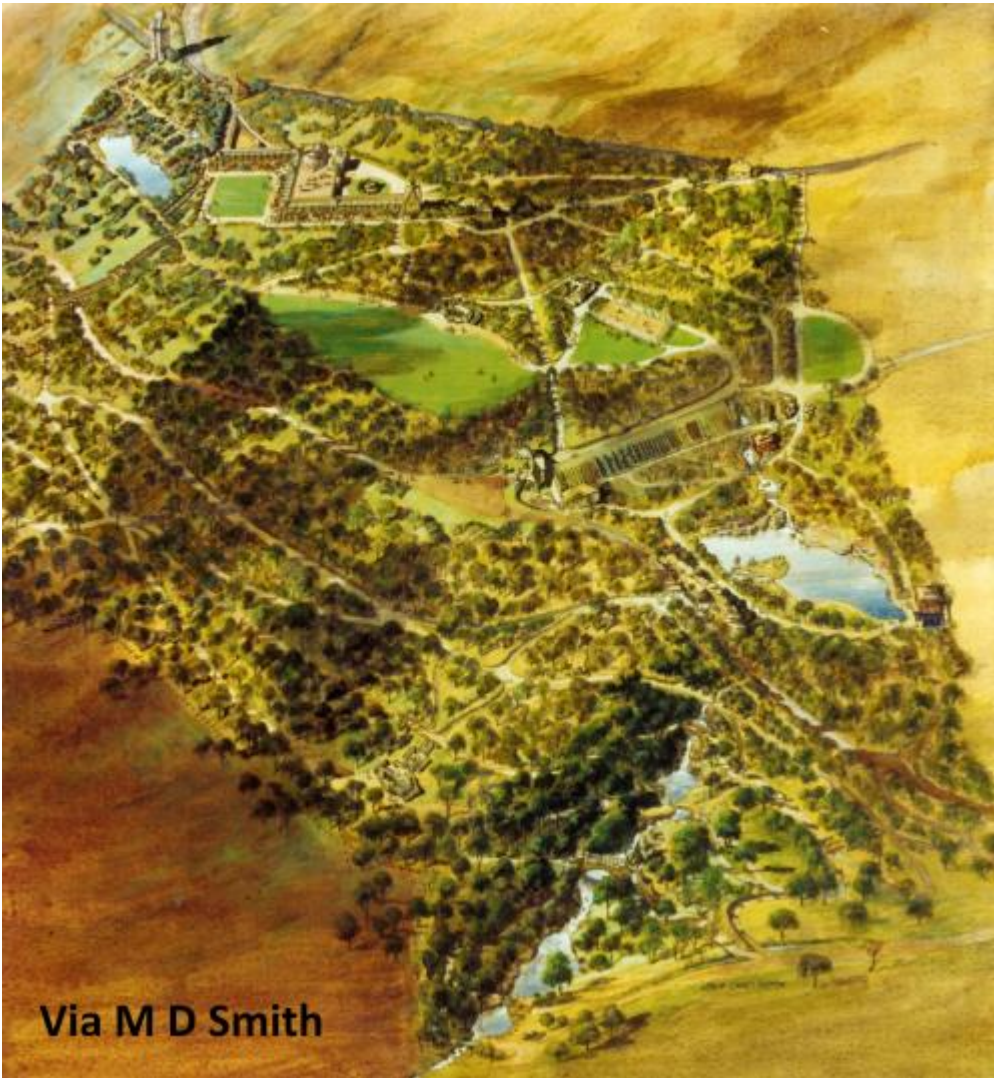
# Legacy written in Landscape?



# Layout of 'The Bungalow' and Pergolas



(Via M D Smith)



Via M D Smith



Courtesy Bolton Archives and Local Studies, via M. Luczak





[www.rivingtonheritagetrust.co.uk](http://www.rivingtonheritagetrust.co.uk)



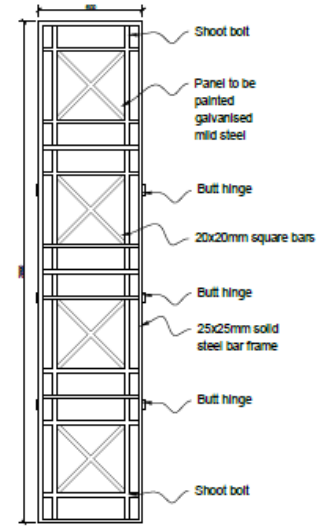
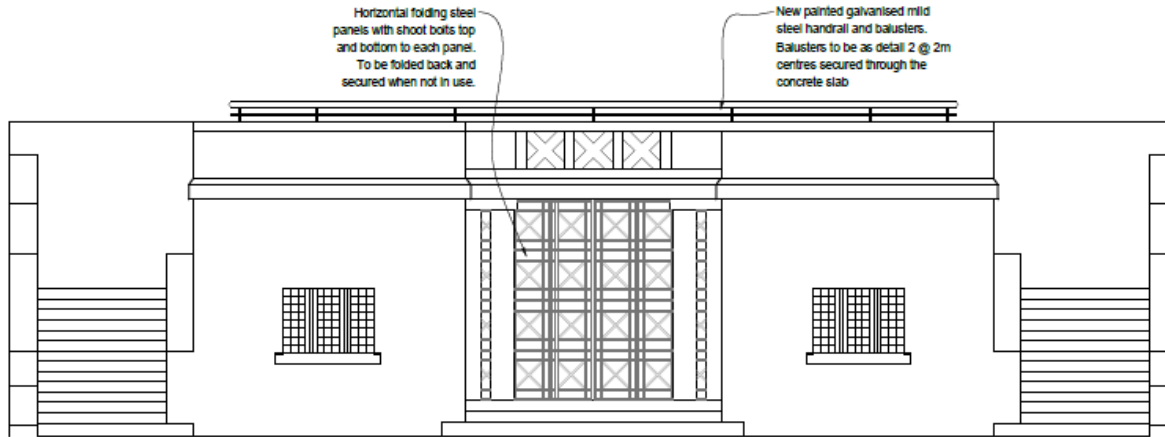
LOTTERY FUNDED



# Plans for the Future

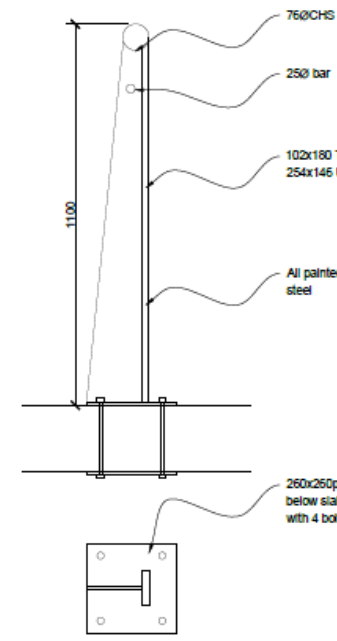
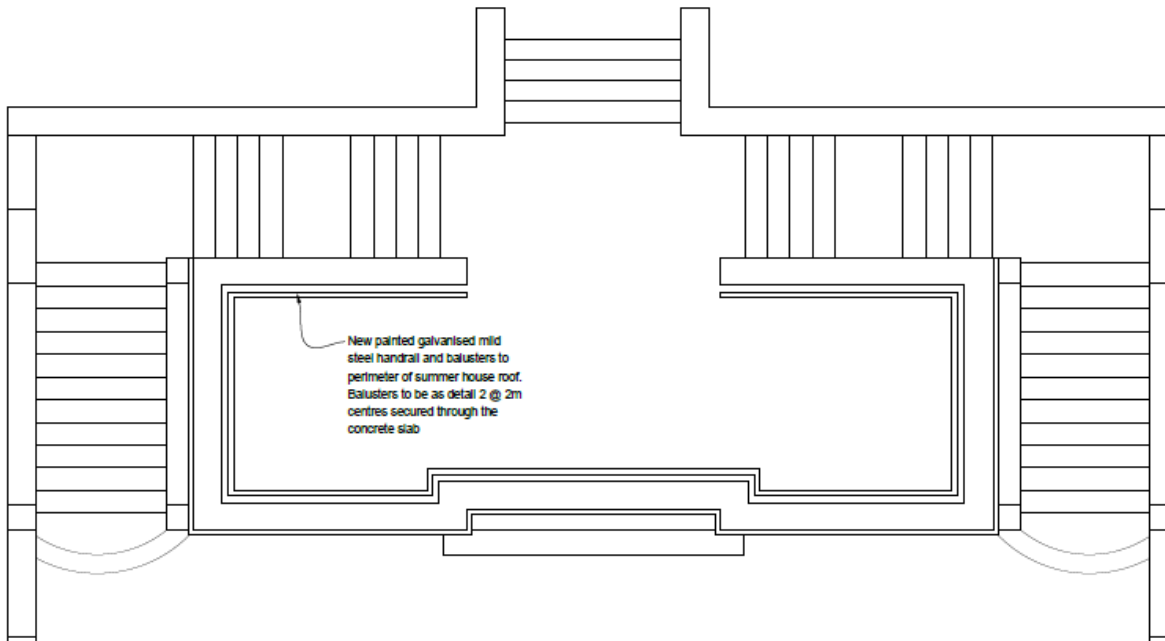
- Conserve
- Protect
- Repair
- Interpret





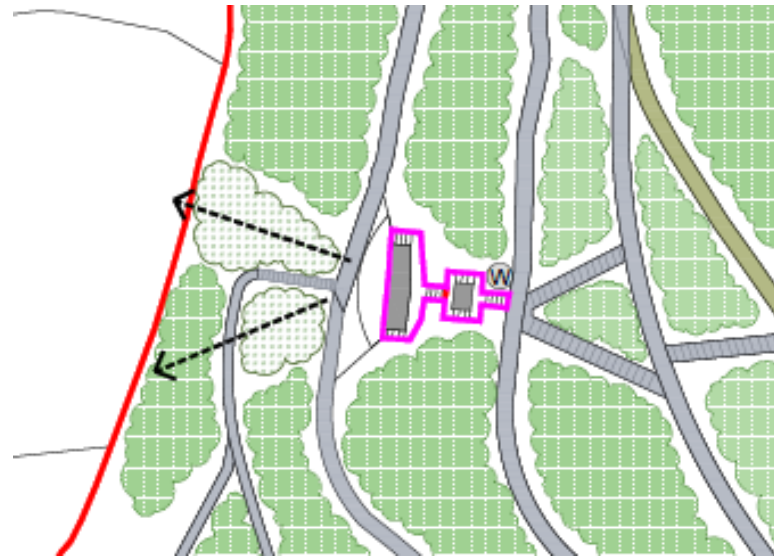
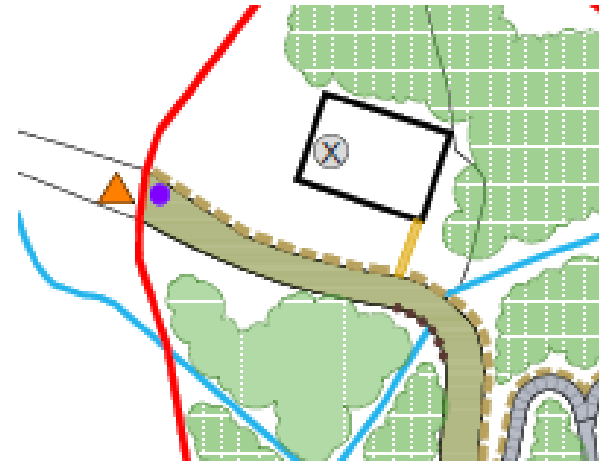
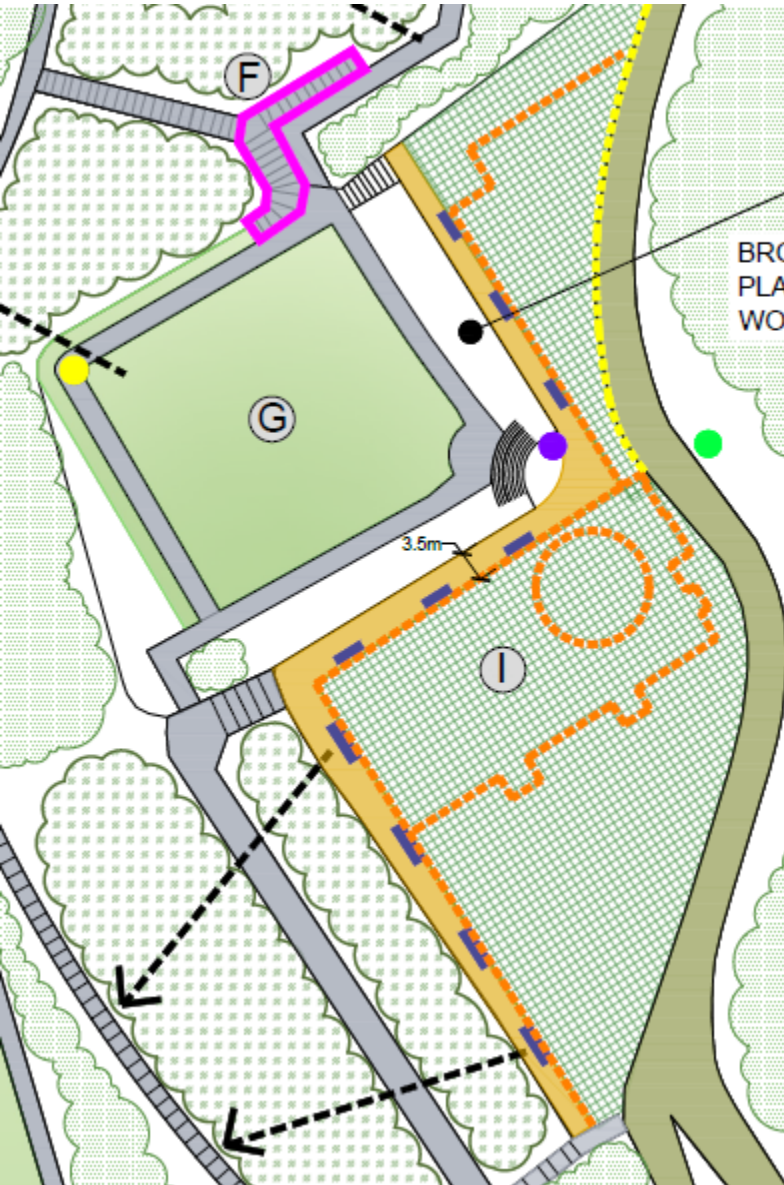
**DETAIL 1: SECURITY SHUTTERS**  
1:20

**LEVER BRIDGE SUMMER HOUSE ELEVATION**  
**PROPOSED SHUTTERS**



**DETAIL 2: NEW BALUSTRADE**  
1:10

**LEVER BRIDGE SUMMER HOUSE ROOF PLAN**





# Timing

- Stage 2 submission – August 2015
- Decision – December 2015
- Further design development and tendering – through 2016
- Implementation – 2017
- Activity Plan – 2016 – 2019
- Management and Maintenance - 2018

